

In the 21 years since NTT BizLink was established, as an ICT partner to our corporate customers, we have been improving our collaboration and communications business, which is focused on video communications and system integration, and our data center solutions business, which is responsible for data center equipment installation and operations.

As of January 1, 2022, NTT BizLink has embarked on a new journey, as a group company affiliated with the new NTT Docomo group and under the corporate business brand Docomo Business.

At present, the digitalization of business activities has become an urgent issue.

We are contributing to the growth and digitalization of businesses by providing valuable services, such as our advanced communication styles and stable, highly reliable communications infrastructure, along with other services such as advanced video on-site solutions like Smart Glass Cloud, Avatour, and Beamo, which are one step ahead of the market, and Digital@ IC Key Terminal that contribute to labor saving in data centers.

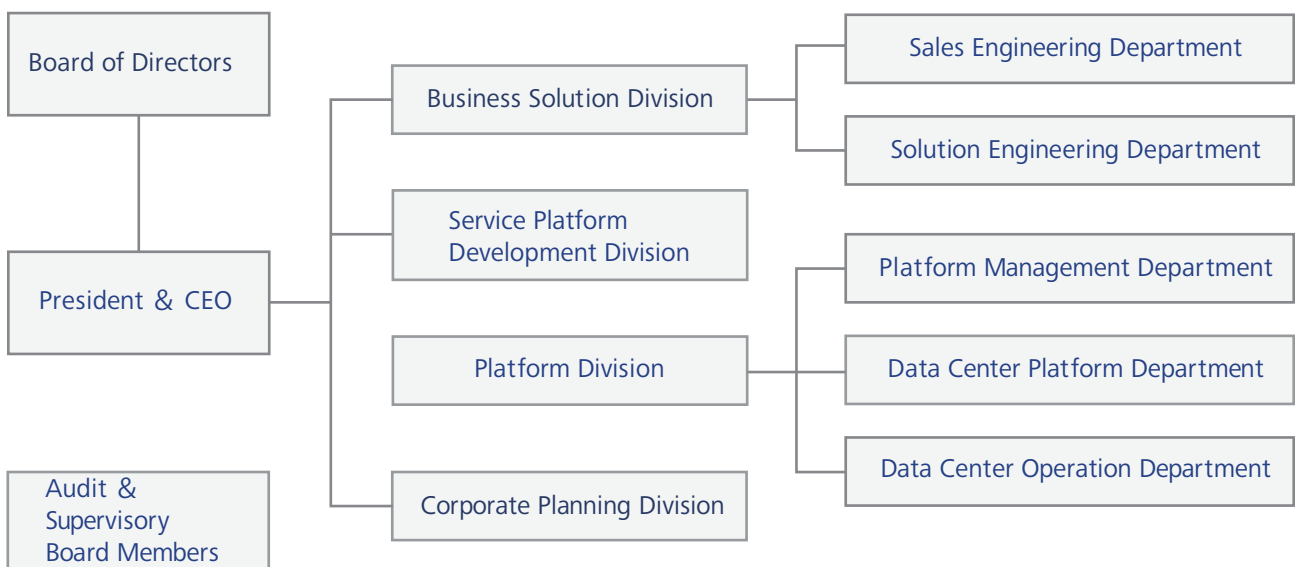
Guided by its vision of “Empathy & Smart,” NTT BizLink will continue to anticipate technological change, listen closely to the voices of our customers and our partners, and build upon the even greater efforts of all our employees.

NTT BizLink’s philosophy is “Challenge & Innovate,” so going forward, please look forward to more of our proposals for innovative business communication solutions.



NTT BizLink, INC.
President & CEO Takeshi Kazami

Organization



Corporate Overview

Corporate Name	NTT BizLink, Inc
Address	Sumitomo Korakuen Bldg. 1-4-1, Koishikawa, Bunkyo-ku, Tokyo 112-0002 JAPAN
URL	https://www.nttbiz.com/
Established	July 2001
Capital and Paid-in Capital	2.45 billion yen (Capital: 100 million yen)
Shareholders	NTT Communications Corporation NIPPON TELEGRAPH AND TELEPHONE EAST CORPORATION
Number of Employees	313 (as of April 1, 2022)
Commercial License	Telecommunications Carrier (A-13-4740) Telecommunication Contractors (29-119467) Security industry (Tokyo Metropolitan Public Safety Commission certification 30004172)
Board of Directors	President & CEO Takeshi Kazami Masatoshi Ito Jun Miyoshi Takashi Yamamoto Kenji Iwasa
Audit & Supervisory Board Members	Masahiro Sato Akira Ito (As of September 1, 2022)
Access	Tokyo Metro Namboku Line, Korakuen Station, 1-minute walk from Exit 8 Tokyo Metro Marunouchi Line, Korakuen Station, 5-minute walk from Exit 4b Toei Mita Line/Oedo Line, Kasuga Station, 1-minute walk from Exits A4 and A5