

NTT BizLink primarily engages in the business of Communication and Collaboration Solutions such as Visual Communication Solutions, Contact Center Solutions, Smart Glass Solutions and Total Infrastructure Solutions as well as Data Center Solutions within the NTT Group, providing optimal and cutting-edge innovation that helps our Japanese customers of corporations and providers solve the operational challenges they face.

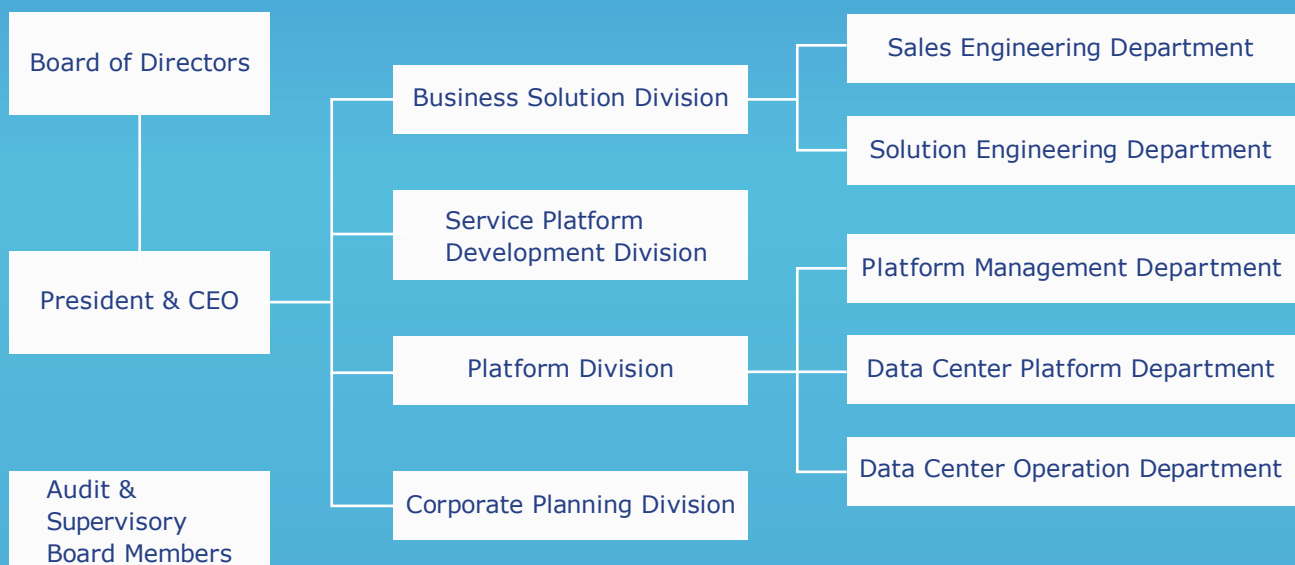
In addition to devising solutions in the most suitable and timely manner, we are delighted when we have the opportunity to become long term partners for our customers and work together towards their development. At the same time, we are aware that our mission as a member of the NTT Group is to provide safe, reliable, and socially responsible solutions.

The vision of NTT BizLink is creating “Empathy & Smart” through conducting our business activities.

To create a smart Japanese society that cherishes empathy among others, and for Japanese companies to smartly place empathy among employees as a source of their strength, we desire to contribute to their development and provide “Empathy & Smart” innovations. Each of us also desires to be an employee of a company that is capable of creating such innovations.

Our slogan is “Challenge & Innovate” . All NTT BizLink employees are united in our efforts to build lasting business links beyond the future, for our clients, for society, and for all of our exciting dreams and passions.

**NTT BizLink, INC.**  
**President & CEO Takeshi Kazami**



## Corporate Overview

<b>Corporate Name</b>	NTT BizLink, Inc
<b>Address</b>	Sumitomo Korakuen Bldg. 1-4-1, Koishikawa, Bunkyo-ku, Tokyo 112-0002 JAPAN
<b>URL</b>	<a href="https://www.nttbiz.com/">https://www.nttbiz.com/</a>
<b>Established</b>	July 2001
<b>Capital and Paid-in Capital</b>	2.45 billion yen (Capital: 100 million yen)
<b>Shareholders</b>	NTT Communications Corporation NIPPON TELEGRAPH AND TELEPHONE EAST CORPORATION
<b>Number of Employees</b>	300 (as of April 1, 2021)
<b>Commercial License</b>	Telecommunications Carrier (A-13-4740) Telecommunication Contractors (29-119467) Security industry (Tokyo Metropolitan Public Safety Commission certification 30004172)
<b>Board of Directors</b>	President & CEO Takeshi Kazami Masatoshi Ito Jun Miyoshi Satoko takahashi Kenji Iwasa
<b>Audit &amp; Supervisory Board Members</b>	Kazuyoshi Terada Akira Ito
<b>Executive Officers</b>	Osamu Hanazaki Kiyonori Murai  (As of October 10, 2021)
<b>Access</b>	Tokyo Metro Namboku Line, Korakuen Station, 1-minute walk from Exit 8  Tokyo Metro Marunouchi Line, Korakuen Station, 5-minute walk from Exit 4b  Toei Mita Line/Oedo Line, Kasuga Station, 1-minute walk from Exits A4 and A5